



October 22, 2022

Bill Sederburg

"I've tested at Ancestry.com.  
Now What?"



### Brief Introduction

Retired university president  
Married, father of 2 (3473 and 3400 cMs)  
Nephew of Uncle Harry  
Related to Viking 186



## Why focus on ancestry.com?

- Powerhouse in genealogical research

As of 2020

- 3.5+ million subscribers
- 20+ million DNA test takers
- 30+ billion digitized records
- 100+ million family trees
- Computing power

Searching for "Stella Taylor"  
2.6 Seconds

209,507 hits in total  
5,337 hits in NC





DNA Test results may be upsetting!

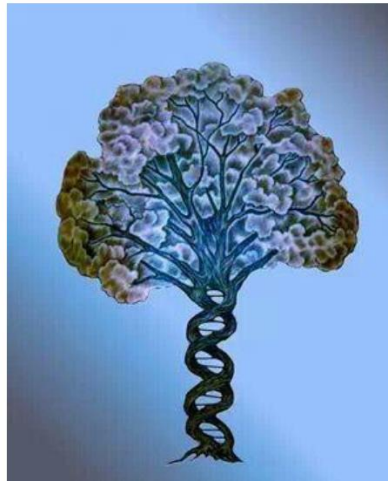
According to 2020 Pew Trust Survey

15% have taken DNA tests

27% were surprised by results

Non Paternal Event (NPE)

2 -10% have unexpected parent



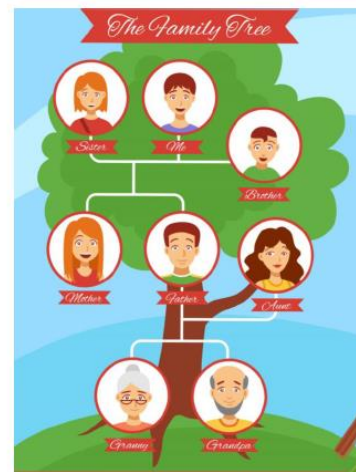
Test results may be upsetting!



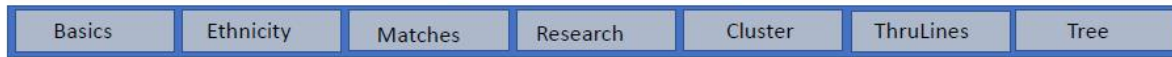
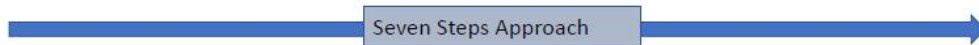
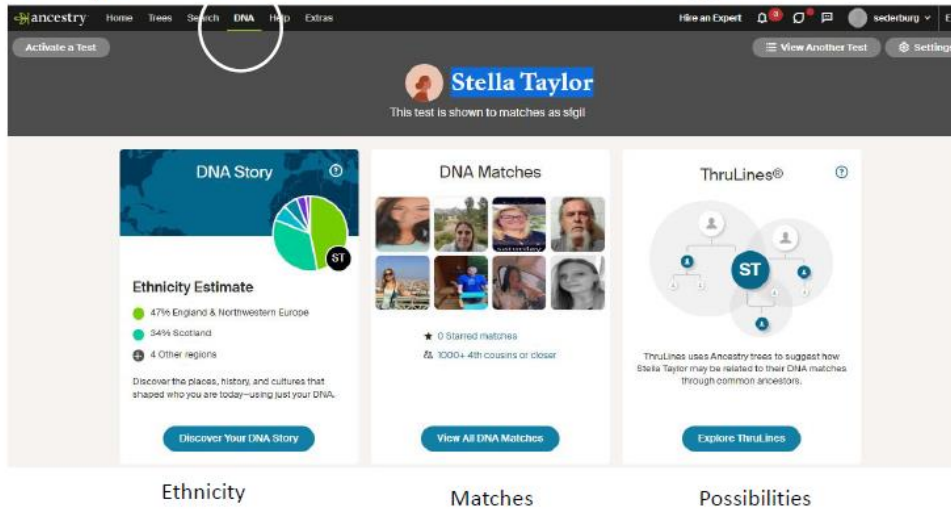
## Seven steps for using DNA results!

- 7. Use genealogy and DNA to update tree
- 6. Use "Thrulines" to explore possibilities
- 5. Use "Shared Matches" to cluster relatives
- 4. Research "Best Mystery Matches" \*
- 3. Review DNA Matches
- 2. Understand Ethnicity (roots)
- 1. Know a few basics

\* "Best Mystery Matches" – Diahan Southard

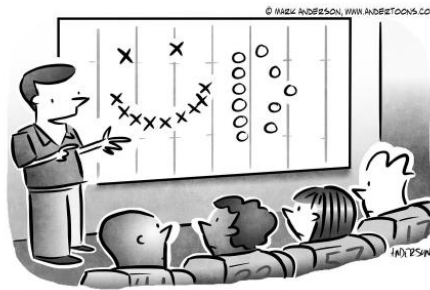


# Ancestry Divides DNA into 3 Categories

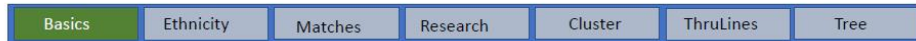


## Step 1: Understanding the basics!

Autosomal DNA  
centiMorgans  
DNA "matches"



"OK, it's not that effective, but what a crowd pleaser!"



## Autosomal DNA!

- Autosomal DNA
  - Inexpensive
  - Largest databases
    - MyHeritage
    - 23&Me
    - FamilyTreeDNA
  - Both sexes
  - <200 years usefulness

Autosomal DNA: 22 pairs of chromosomes and 1 sex chromosome – not YDNA or Mitochondrial DNA

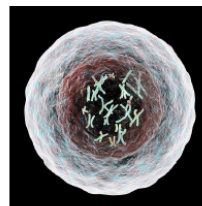
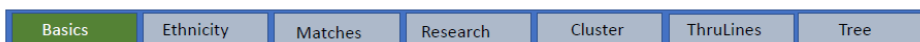


Photo of cell with chromosomes by Kateryna Kon.



# What is a “centiMorgan?”

“CentiMorgan” is a term used to describe the amount of DNA shared between two people.

It is a measure of “genetic distance” developed by Thomas Hunt Morgan in the early 1900 studying fruit flies.



Basics	Ethnicity	Matches	Research	Cluster	ThruLines	Tree
--------	-----------	---------	----------	---------	-----------	------

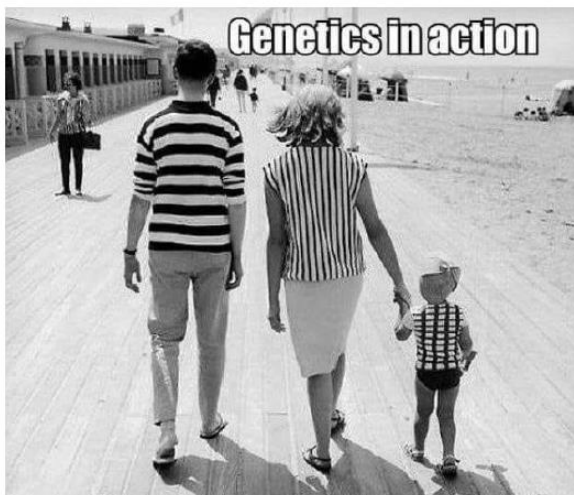
## How useful is a “centiMorgan?”

- Each individual has approximately 6,800 – 7,000 centi-Morgans (cMs) of DNA to share.
- Stella’s son Ian got 3,487 cMs of his DNA from Stella
- Stella’s granddaughter “J.H.” got 1,522 cM from Stella
- Stella’s great granddaughter will get 700 to 900 cM from Stella



Stella	6800 cM
Ian	3487 cM
J.H	1522 cM
3 <sup>rd</sup> Gen	850 cM
4 <sup>rd</sup> Gen	425 cM
5 <sup>rd</sup> Gen	212 cM

Basics	Ethnicity	Matches	Research	Cluster	ThruLines	Tree
--------	-----------	---------	----------	---------	-----------	------



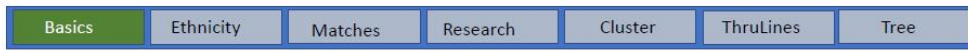
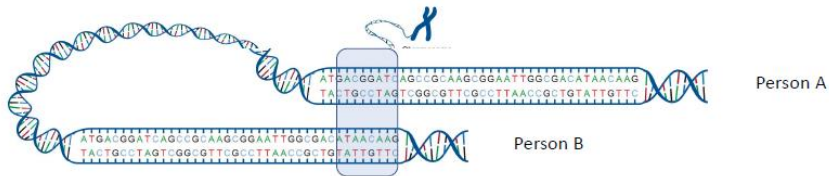
Stella	6800 cM
Ian	3487 cM
J.H	1522 cM
3 <sup>rd</sup> Gen	850 cM
4 <sup>rd</sup> Gen	425 cM
5 <sup>rd</sup> Gen	212 cM

Basics	Ethnicity	Matches	Research	Cluster	ThruLines	Tree
--------	-----------	---------	----------	---------	-----------	------

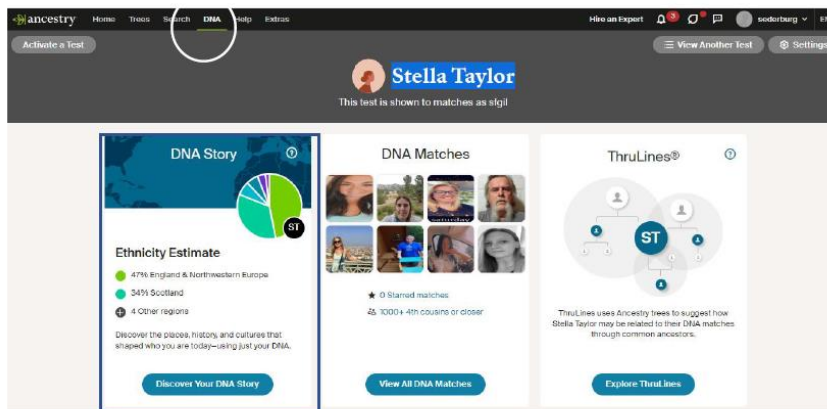


## Shared DNA Matches Between Two Test Takers

Ancestry Reports  
 Shared DNA (cMs)  
 (number and percent)  
 Number of segments shared

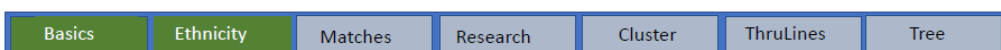
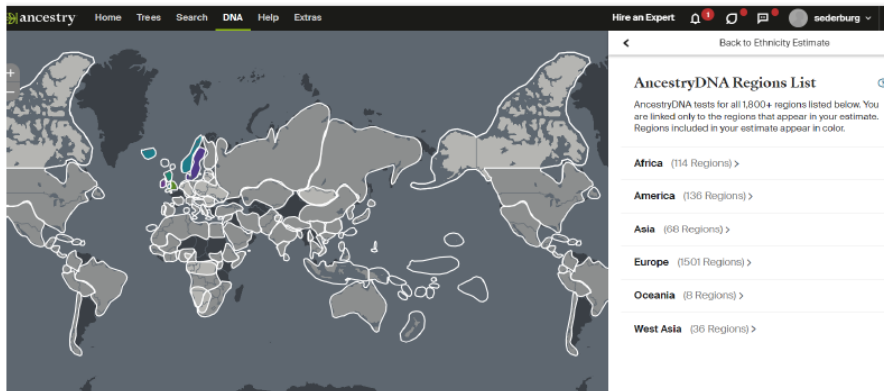


## Ethnicity Estimate!

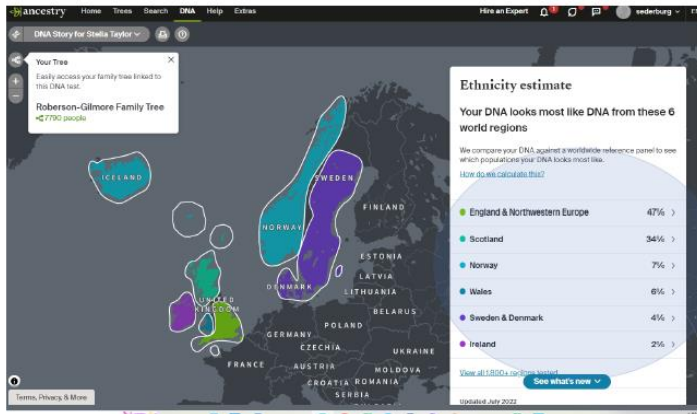


## Ancestry divides the world into 1800+ regions.

- Ancestry samples DNA from local families



## Stella's Ancient (1,000s Yrs) Ethnicity!



Basics Ethnicity Matches Research Cluster ThruLines Tree

## Ethnicity by parent!

### Ethnicity inheritance **NEW**

#### Your regions inherited from each parent

Your parents each contributed half of your DNA. Now, you can see which ethnicities you inherited from each parent—even if they haven't taken tests.



[View breakdown](#) [How we identify this](#)

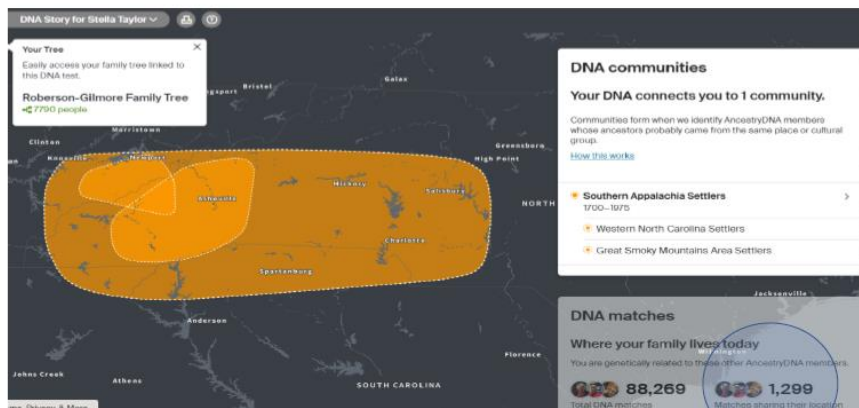
### Detailed comparison

Same data, more detail. This chart shows the percentages of each ethnicity you inherited from your parents. Added together, the percents from each parent for a region equals your percent for that region.

Region	Parent 1	Parent 2	You
Total: 6	60%	60%	100%
England & Northwestern Europe	22%	25%	47%
Scotland	22%	12%	34%
Norway	0%	7%	7%
Wales	0%	6%	6%
Sweden & Denmark	4%	0%	4%
Ireland	2%	0%	2%

Basics Ethnicity Matches Research Cluster ThruLines Tree

## Communities on Ancestry (<300 years)



Basics Ethnicity Matches Research Cluster ThruLines Tree

# Community Timelines and Story

**DNA Story for Stella Taylor**

**WNC Settlers**

**Southern Appalachia Settlers**

Overview

1700

1725

1750

1775

1800

1825

1850

1875

1900

1925

1950

People in Your Tree

View more people from this time period on the map

Johanna "Hannah" Hunt Green  
5th Great-Grandmother

Mary Neal "Marsy" Marshall  
Wiseman  
6th Great-Grandmother

Mary "Polly" Morris Grant  
6th Great-Grandmother

Basics Ethnicity Matches Research Cluster ThruLines Tree

## Notes on Ethnicity

- Not race
- Not national boundaries (Prussia, Germany, Sweden, etc.)
- Differs by company
- Constantly being refined



Basics Ethnicity Matches Research Cluster ThruLines Tree

## Ancestry compares people's DNA.

**ancestry** Home Trees Search **DNA** Help Extras

Activate a Test

Stella Taylor

This test is shown to matches as sigil

**DNA Story**

**Ethnicity Estimate**

- 47% England & Northwestern Europe
- 34% Scotland
- 4 Other regions

Discover the diverse history and cultures that shaped who you are today—using just your DNA.

**DNA Matches**

★ 0 Starred matches

45,100+ 4th cousins or closer

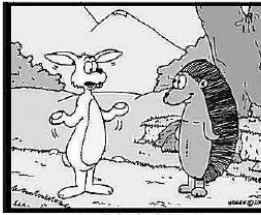
**ThruLines®**

ThruLines uses Ancestry trees to suggest how Stella Taylor may be related to their DNA matches through common ancestors.

Discover Your DNA Story View All DNA Matches Explore ThruLines

Basics Ethnicity Matches Research Cluster ThruLines Tree

Stella has 88,449 DNA matches!  
Cheryl's relative has 119,000 matches!



Basics

Ethnicity

Matches

Research

Cluster

ThruLines

Tree

## Stella's DNA Matches



**Stella Taylor's DNA Matches**  
View Robinson-Gimons Family Tree

Filter by: **Unviewed** Common ancestors Message Notes Trees Shared DNA Groups Search | Sort

**Parent/Child**

	<b>Ian Taylor</b> Son 3,487 cM   50% shared DNA Both sides	Unlinked Tree	<a href="#">View match</a>
--	---	---------------	----------------------------

**Close Family**

	<b>J.H.</b> Managed by Sonya Taylor Granddaughter 1,522 cM   22% shared DNA Both sides	Unlinked Tree	<a href="#">View match</a>
	<b>crowellm</b> 1st cousin 1x removed 452 cM   6% shared DNA Mother's side	Unlinked Tree	<a href="#">View match</a>

**Extended Family**

	<b>Mirian</b> Managed by Debi 2nd - 3rd Cousin 200 cM   3% shared DNA	Public linked tree 325 People	<a href="#">View match</a>
--	--	----------------------------------	----------------------------

[Link Tree to DNA Results](#)

Basics

Ethnicity

Matches

Research

Cluster

ThruLines

Tree

## How to searching your matches!

**Stella Taylor's DNA Matches**  
View Robinson-Gimons Family Tree

By parent: **Stella** **All matches** By location

Filter by: **Unviewed** Common ancestors Message Notes Trees Shared DNA Groups Search | Sort

**Parent/Child**

	<b>Ian Taylor</b> Son 3,487 cM   50% shared DNA Both sides	Unlinked Tree	<a href="#">View match</a>
--	---	---------------	----------------------------

**Close Family**

	<b>J.H.</b> Managed by Sonya Taylor Granddaughter 1,522 cM   22% shared DNA Both sides	Unlinked Tree	<a href="#">View match</a>
	<b>crowellm</b> 1st cousin 1x removed 452 cM   6% shared DNA Maternal side	Unlinked Tree	<a href="#">View match</a>

Basics

Ethnicity

Matches

Research

Cluster

ThruLines

Tree



## How to searching your matches!

Stella Taylor's DNA Matches  
View Roberson-Gilmore Family Tree

By parent **BETA** **All matches** By location

Filter by: **Unviewed** Common ancestors Messaged Notes Trees Shared DNA Groups

Match name: First name, last name or username  
Surname in match's tree: Taylor  
Birth location in match's tree: Candler, Buncombe, North Carolina, USA

Search Cancel

Match Name Surname in Tree Birth Location

## New - Matches by parent

Stella Taylor's DNA Matches  
View Roberson-Gilmore Family Tree

By parent **BETA** **All matches** By location

How did we do?

Parent 1  
43,072 matches  
View matches

Parent 2  
30,450 matches  
View matches

Common ancestors  
Davis  
Green  
Morgan  
Alexander

Common ancestors  
Smith  
Davis  
Abbey  
Allen

Ethnicity  
Parent 1  
Parent 2

## Tools to Filter Matches

ancestry Home Trees Search **DNA** Help Extras Hire an Expert

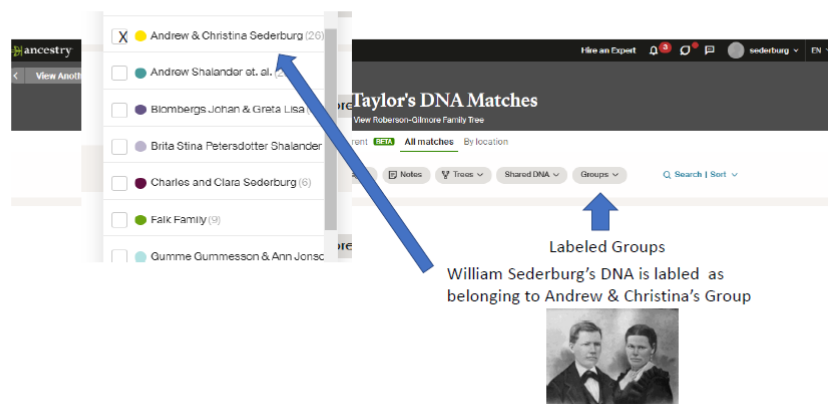
Stella Taylor's DNA Matches  
View Roberson-Gilmore Family Tree

By parent **BETA** **All matches** By location

Filter by: **Unviewed** Common Ancestors Messaged Notes Trees Shared DNA Groups

Unviewed Common Ancestors Messaged Notes Trees Shared DNA Groups

## Labeling your matches



Basics

Ethnicity

Matches

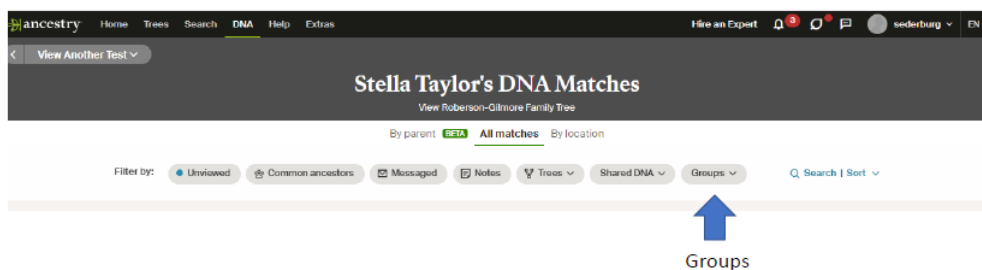
Research

Cluster

ThruLines

Tree

## Labeling your matches!



Cheryl Chasin will talk about techniques she has used group DNA matches!

Basics

Ethnicity

Matches

Research

Cluster

ThruLines

Tree

## You should label your matches!



Basics

Ethnicity

Matches

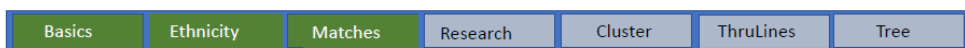
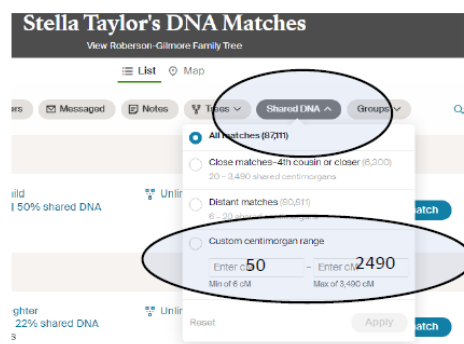
Research

Cluster

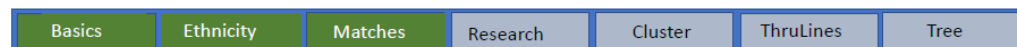
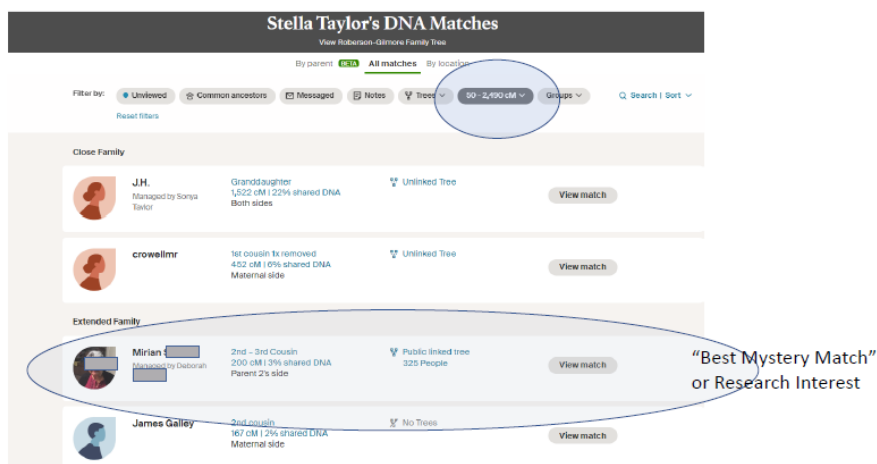
ThruLines

Tree

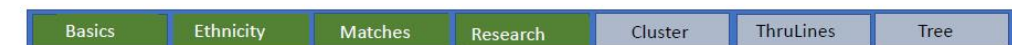
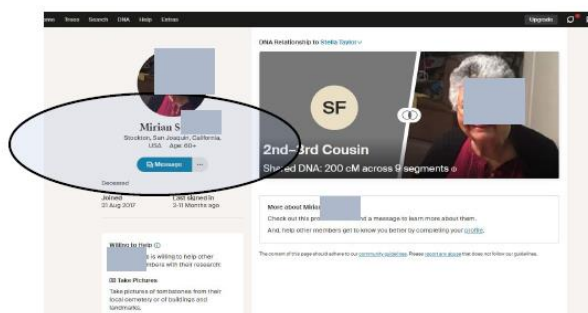
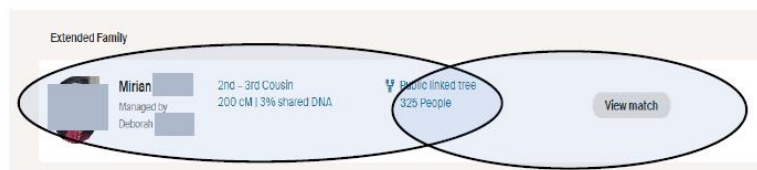
Reduce the number of matches!



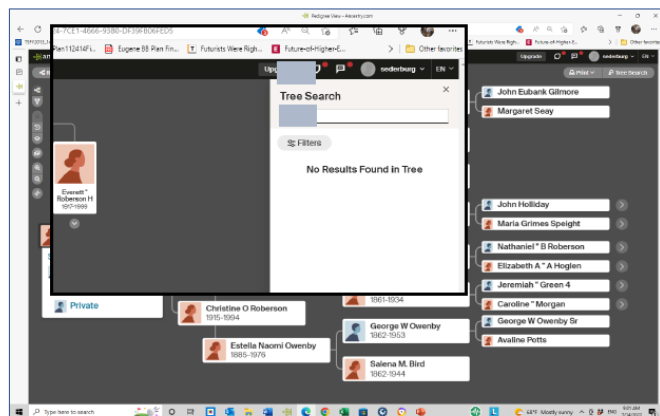
Identify “Best Mystery Match”



Mystery Match



No Mirian \_\_\_\_\_ in Stella's tree



Basics

Ethnicity

Matches

Research

Shared

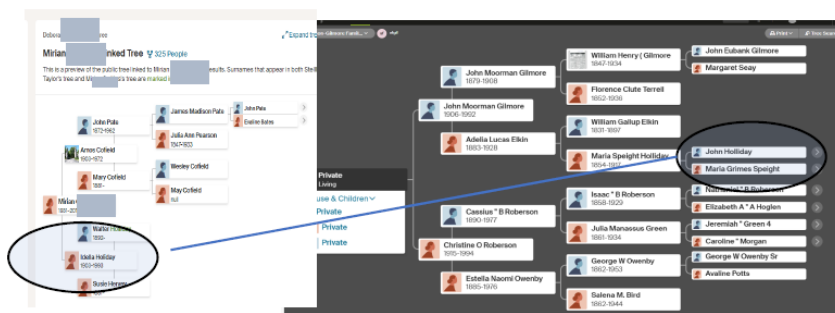
ThruLines

Tree

Look for common names in trees!

Mirian's Tree

Stella's Tree



Basics

Ethnicity

Matches

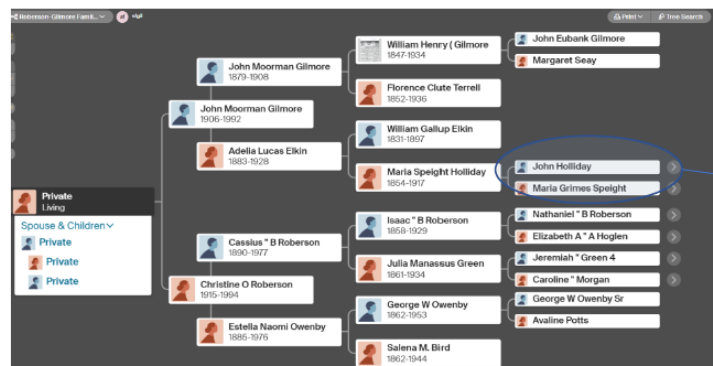
Research

Cluster

ThruLines

Tree

Common relative is a "Holliday" or "Holiday"



William Holliday

Green Co. NC

200 cMs: 4-5 generations out – need another generation

Basics

Ethnicity

Matches

Research

Cluster

ThruLines

Tree



## John Holliday

Plantation & Slave Owner, Monroe  
County Mississippi - 1837

“Holliday Haven” home built in  
1850

Stella and cousin visiting  
“Holliday Haven”



National Register of Historic Places

Basics

Ethnicity

Matches

Research

Cluster

ThruLines

Tree

## John Holliday Slave Narrative

*Monroe County Slave Narratives*

Ex-Slave Biography

**Wayne Holliday**  
Aberdeen, Mississippi  
Interviewer: Mrs. Richard Kolb

I was born an' raised in Aberdeen an' I've been a railroad nigger fo' mos' of my days. I've retired now 'cause dey say I too old to work any longer, but shucks, I ain't half dead yet. I was born in 1853 right here close to whar I live now. My folks b'longed to de Hollidays-- you know de grand folks of Miss Maria Evens? An' we stayed right dere in de lot whar de white folks lived.

"My pa an' my ma was named Frank an' Sarah Holliday an' de Cunel brung dem wid him from North Carolina. Dey was lot niggers an' never worked in de fiel' or lived in de Quarters. My pa was one of de best carpenters in de country. I was too young to work much but sometime I he'ped him 'roun' de house but mos' of de time, I jes played wid my brudders an' sisters an' de white chullus what lived aroun'. We played marbles, ridin' de stick hose, an' play house jes lak de chullun now days, but I think we had mo' fun. Dey was fo'teen of us in our family an' we allus had somebody to play wid. An' den li'l Marse Ben,

Basics

Ethnicity

Matches

Research

Cluster

ThruLines

Tree

## Wayne Holliday's "Slave Narrative"

*Monroe County Slave Narratives*

Ex-Slave Biography

**Wayne Holliday**  
Aberdeen, Mississippi  
Interviewer: Mrs. Richard Kolb

Wayne Holliday - 1853  
Parents – Frank & Sarah Holliday  
From North Carolina

"I was born an' raised in Aberdeen an' I've been a railroad nigger fo' mos' of my days. I've retired now 'cause dey say I too old to work any longer, but shucks, I ain't half dead yet. I was born in 1853 right here close to whar I live now. My folks b'longed to de Hollidays-- you know de grand folks of Miss Maria Evens? An' we stayed right dere in de lot whar de white folks lived.

"My pa an' my ma was named Frank an' Sarah Holliday an' de Cunel brung dem wid him from North Carolina. Dey was lot niggers an' never worked in de fiel' or lived in de Quarters. My pa was one of de best carpenters in de country. I was too young to work much but sometime I he'ped him 'roun' de house but mos' of de time, I jes played wid my brudders an' sisters an' de white chullus what lived aroun'. We played marbles, ridin' de stick hose, an' play house jes lak de chullun now days, but I think we had mo' fun. Dey was fo'teen of us in our family an' we allus had somebody to play wid. An' den li'l Marse Ben,

Basics

Ethnicity

Matches

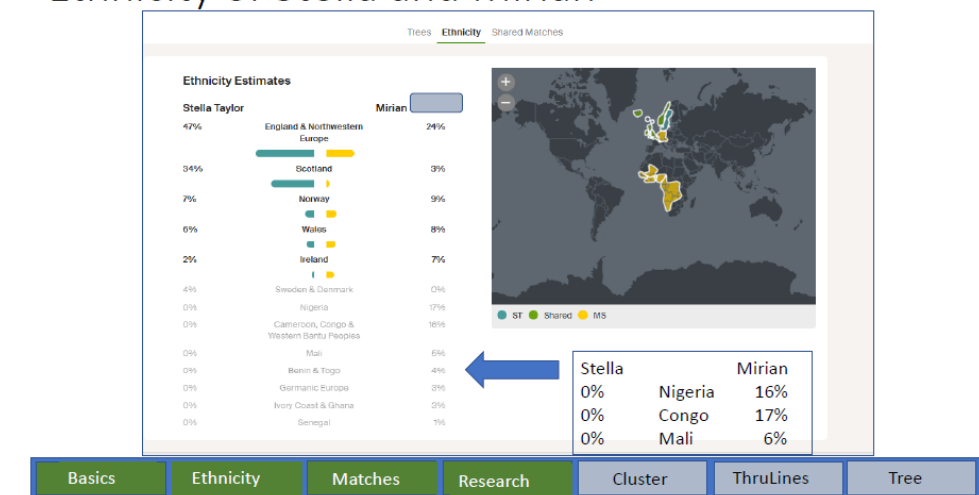
Research

Cluster

ThruLines

Tree

## Ethnicity of Stella and Mirian



## Clustering DNA relatives

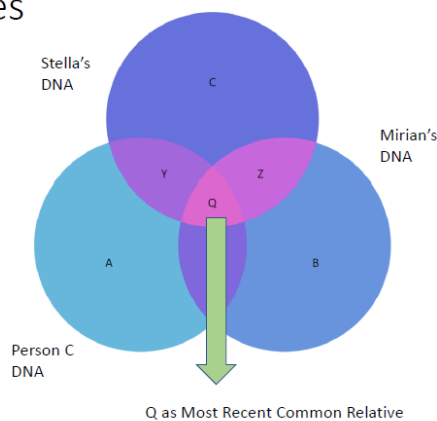
Label Matches

Review Shared Matches

Keep records for overlap

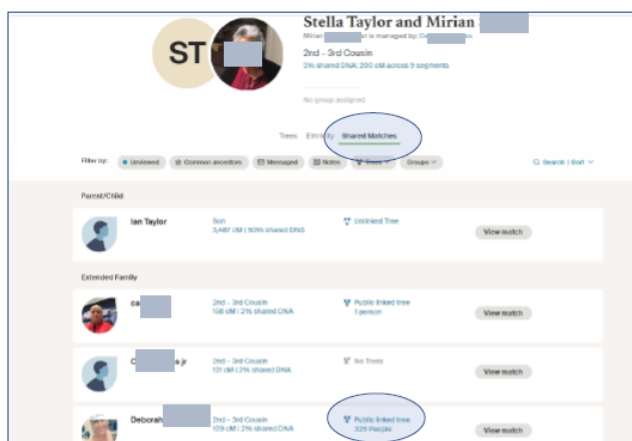
Watch Cheryl's presentation

Also known as "Triangulation" in more sophisticated sites.



Navigation: Basics | Ethnicity | Matches | Research | **Cluster** | ThruLines | Tree

## DNA Matches shared by Stella & Marian



Navigation: Basics | Ethnicity | Matches | Research | **Cluster** | ThruLines | Tree

# Possibilities by computer

ancestry Home Tools Search **DNA** Help Extras Hire an Expert View Another Test Settings

Activate a Test

**Stella Taylor**  
This test is shown to matches as stgl

**DNA Story**

**Ethnicity Estimate**

- 47% England & Northwestern Europe
- 34% Scotland
- 4 Other regions

Discover the place, history, and culture that shaped who you are today—using just your DNA.

Discover Your DNA Story

**DNA Matches**

0 Shared matches  
1000+ 4th cousins or closer

View All DNA Matches

**ThruLines®**

ThruLines uses Ancestry trees to suggest how Stella Taylor may be related to their DNA matches through common ancestors.

Explore ThruLines

Basics Ethnicity Matches Research Cluster ThruLines Tree

## Shared Matches Lead to ThruLines

Distant Family

Speight Jenkins	4th - 6th Cousin 57 cM (+ 7% shared DNA)	Unlinked tree	View match
B.R.	4th - 6th Cousin 39 cM (+ 1% shared DNA)	Public linked tree 8th People Common ancestor	View match
Toni Jacques	4th - 6th Cousin 37 cM (+ 1% shared DNA)	Public linked tree 5 People	View match
can173	4th - 6th Cousin 34 cM (+ 1% shared DNA)	Public linked tree 105 People Common ancestor	View match
Carmen Fields	4th - 6th Cousin 34 cM (+ 1% shared DNA)	Public linked tree 1,223 People	View match

**Relationship to B.R.**  
Stella Taylor may be related to B.R. through Benjamin Tyson MAY

Benjamin Tyson MAY  
4th great-grandfather  
1768-1851

Mary Collins May  
2nd great-grandmother  
1800-1825

Benjamin F May  
3rd great-grandfather  
1812-1863

Mario Collins Speight  
2nd great-grandmother  
1807-1864

Mary Finetta May  
1st cousin-4x removed  
1845-1917

Mario S Holliday  
Great-grandmother  
1854-1917

Adella Lucile Ekin  
Paternal grandmother  
1855-1925

John Moonshan Glenore  
Father  
1855-1922

B.R.  
3rd cousin-2x removed  
38 cM 14 segments

ST

Basics Ethnicity Matches Research Cluster ThruLines Tree

## “ThruLines”

Ancestry reviews millions of trees

Connect Trees

Names

Dates

Locations

Ethnicity

Powerful - but suggestions only

**ThruLines®**

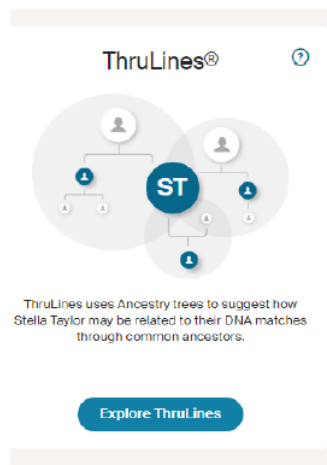
ThruLines uses Ancestry trees to suggest how Stella Taylor may be related to their DNA matches through common ancestors.

Explore ThruLines

Basics Ethnicity Matches Research Cluster ThruLines Tree

## Exploring “ThruLines”

Stella has weeks of recommendations available for exploration!



Basics

Ethnicity

Matches

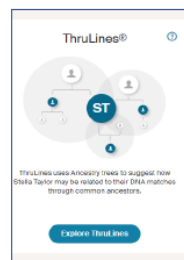
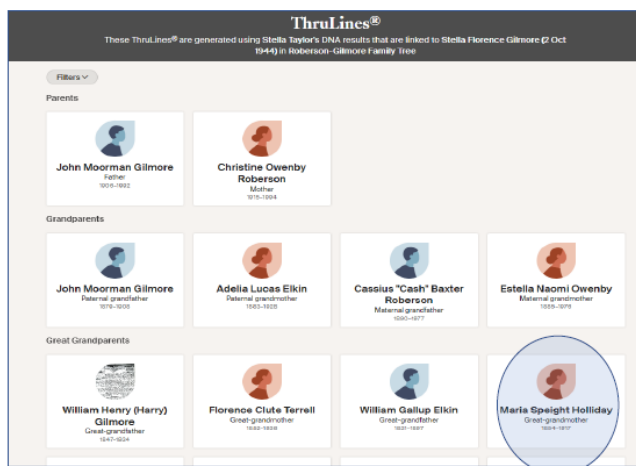
Research

Cluster

ThruLines

Tree

## Stella's “ThruLines”



Basics

Ethnicity

Matches

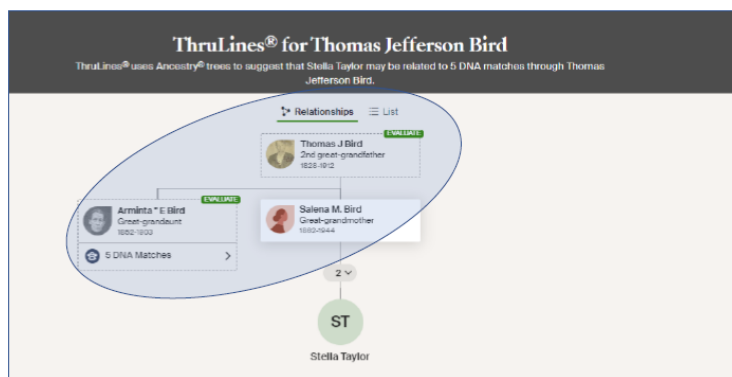
Research

Cluster

ThruLines

Tree

## Stella's “ThruLines” with Thomas Jefferson Bird



Basics

Ethnicity

Matches

Research

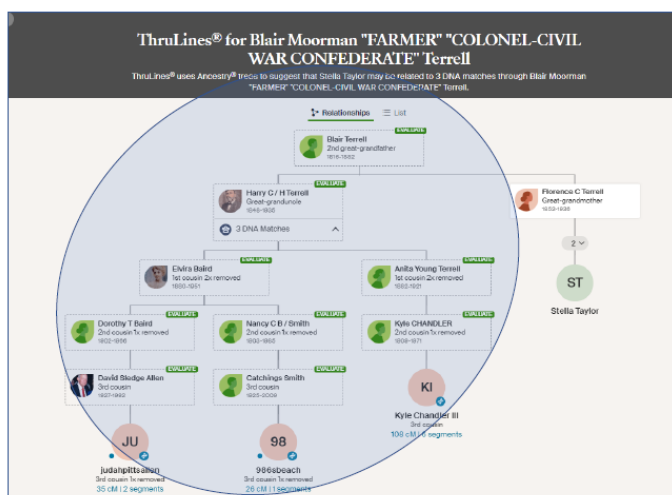
Cluster

ThruLines

Tree



## Stella's "ThruLines" with Blair Moorman Terrell



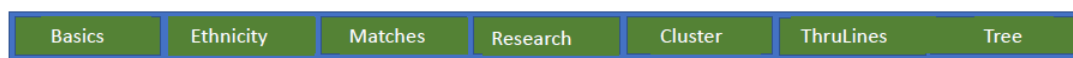
## Growing your tree.

Ancestry does most of the work during your research.

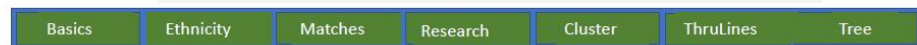
Create extra trees to avoid contaminating your tree.

Confirm matches— there is a lot of bad information in family trees.

Add your wisdom, experience, and sources.

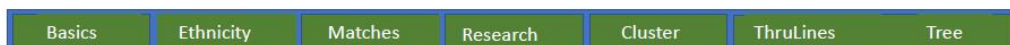


Thanks to Stella for sharing her data!



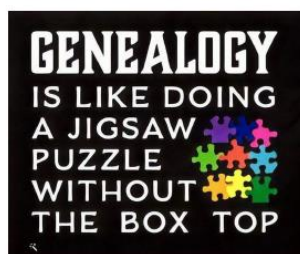
## Quick Recap!

- 7. Use genealogy and DNA to update tree
- 6. Use “ThruLines” to explore possibilities
- 5. Use “Shared Matches” to cluster relatives
- 4. Research “Best Mystery Matches” \*
- 3. Review DNA Matches
- 2. Understand Ethnicity (roots)
- 1. Know a few basics



Hope this is helpful!

- Incredible matching of DNA science and computing power.
- Only first step – DNA research gets much deeper.
  - Chromosome browser
  - YDNA & MtDNA
  - GedMatch & other providers
- You are welcome to join the DNA interest group.



OBCGS Interest Group meets on the first Saturday of the month, 1:00 – 3:00 PM. The Zoom meeting is recorded and available to watch later. Contact [info@obcgs.com](mailto:info@obcgs.com) if you would like to join the group.

10-22-2022